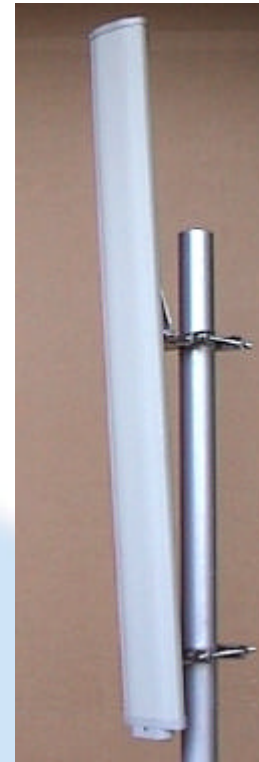




Dual Polarised Antenna  
Type: 2211

- ❑ SINGLE-BAND 3G APPLICATIONS
- ❑ ULTRA LOW-PROFILE RADOME
- ❑ SIDELOBE SUPPRESSION

The '3G Series' of panel antennas have been designed to easily facilitate the installation of Third Generation Cellular infrastructure into new or existing networks. A number of models provide variations in both gain and fixed electrical downtilt to exactly suit the required cell coverage. Slimline radomes reduce visual impact & provide an easily installed, robust enclosure. An extremely low component count and one-piece PCB result in consistently high product quality and reliability, having an excellent intermodulation performance. The mounting brackets enable Tilt or Pan + Tilt options. Two connectors are provided on the base of the unit.



TECHNICAL SPECIFICATION

MODEL 2211

Frequency	: 1900 - 2170 MHz
Horizontal Beamwidth	: 65°
Vertical Beamwidth	: 6°
Gain	: 18.5 dBi
VSWR	: 1.4:1 max
Fixed electrical downtilt options	: 2, 4, 6, 8 or 10°
Upper sidelobe suppression	: < 18 dB
Below horizon null-fill	: 1st null <18 dB below beam peak
Isolation	: 30dB typical
Front-to-back ratio	: >30 dB @ ± 180° azimuth
Power handling	: 200 Watts
Connectors	: 2 x 7/16" DIN (socket at bottom)
Dimensions	: 1560 mm x 142 mm x 43 mm
Operational wind speed	: 45 m/s (160 Km/h)
Survival wind speed	: 56 m/s (200 Km/h)
Max wind loading (Front)	: 329 N @ 45m/s
Weight	: 5.0 Kg
Temperature Range	: - 40°C to + 70°C
Bracket Options	: Tilt only ± 8° Pan (± 30°) & Tilt (8° down 2° up)

