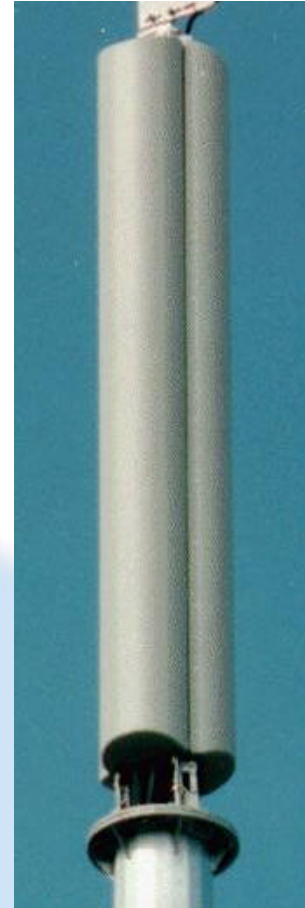




**GSM900 XP/3-85/16
MODEL 1721**

- TRI-SECTOR MONOPOLE MOUNTING
- DUAL POLARISATION
- SUPRESSED SIDELOBES

The 1721 antenna system is a 3-sector 85° beamwidth per sector cluster array. The cluster diameter is 406mm which displays a very low profile to ease planning permission. The system is complete with central mounting spine and base flange. The antennas have a fixed electrical tilt of 4°, and the system comes complete with mechanical tilt bars to allow either additional downtilt or uptilt of 4°.



Technical Specification

Frequency	870-960 MHz
Horizontal Beamwidth	3 x 85°
Vertical Beamwidth	8.6°
Gain	16 dBi
VSWR	1.3:1 maximum
Front-to-back ratio	>25 dB
Upper sidelobe suppression	> -19 dB
Fixed electrical downtilt	4°
Isolation	>25 dB
Connectors	6 x 7/16" DIN female
Power rating	200 watts
Operational wind speed	45 m/s
Survival wind speed	56 m/s
Wind loading	856N @ 45m/s with 0° downtilt
Bracket tilt	0-4° uptilt 2° downtilt
Dimensions	2657 x 406mm diameter
Weight	85 Kg
Temperature Range	- 40°C to + 65°C

