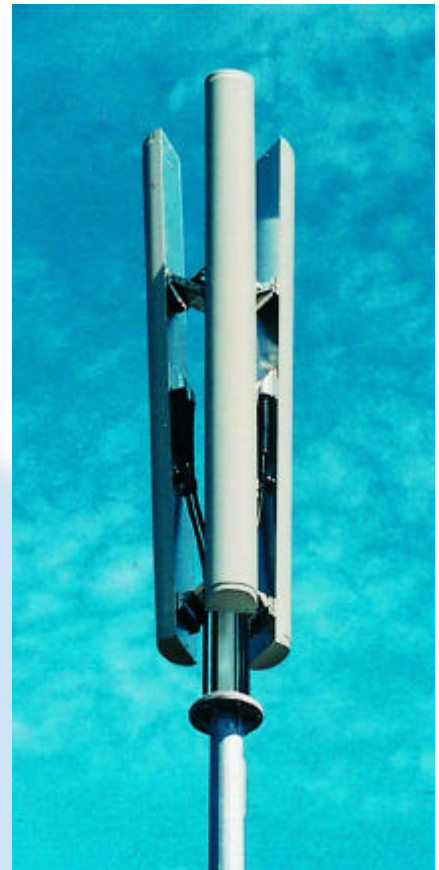




**GSM900 XP/85/16
MODEL 1662**

- DUAL POLARISATION
- 85 DEGREE SECTOR COVERAGE
- SUPRESSED SIDELOBES

These dual-polarised antennas are intended for sites where a wider sector coverage is desired. A number of models provide gain & fixed electrical downtilt to exactly suit the location, while the electrical design features highly-suppressed sidelobes to minimise interference with adjacent cells. Superior circuit design coupled with advanced manufacturing techniques guarantee consistent product quality, with excellent intermodulation performance.



Technical Specification

Frequency	870-960 MHz
Horizontal Beamwidth	85°
Vertical Beamwidth	9°
Gain	16 dBi
VSWR	1.3:1 maximum
Front-to-back ratio	>25 dB
Upper sidelobe suppression	> -19 dB
Fixed electrical downtilt	4°
Isolation	>30 dB
Connectors	2 x 7/16" DIN female
Power rating	500 watts
Operational wind speed	45 m/s
Survival wind speed	56 m/s
Wind loading	873N @ 45m/s
Bracket downtilt	0-10°
Dimensions	2330 x 253 x 145(depth)mm
Weight	15.7 Kg
Temperature Range	- 55°C to + 65°C

