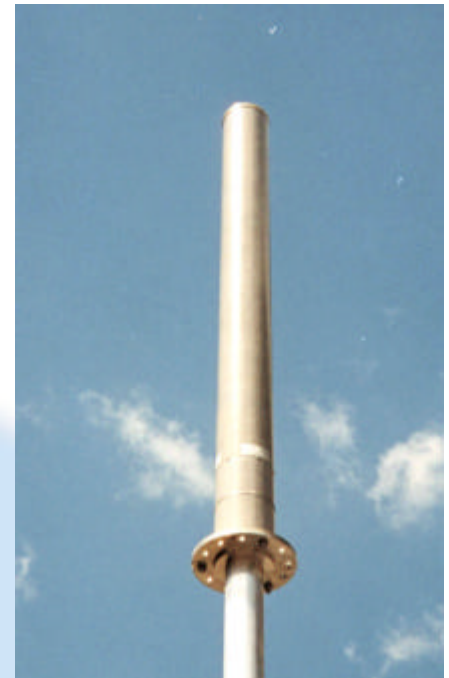




**GSM1800 XP/3-65/18  
MODEL 103-0001**

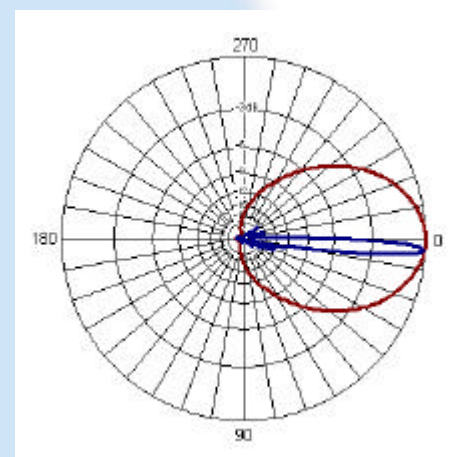
- TRI-SECTOR MONOPOLE MOUNTING
- DUAL POLARISATION
- 3 X 65 DEGREE SECTORS

The antenna system is an array of 3 x 65 degree antennas mounted within a cylinder. The cluster diameter is 167mm, providing a very low profile to ease planning applications. The system is supplied complete with mini -stub tower allowing easy access to the coaxial feeders. The individual arrays can be supplied with 2, 4 or 6 degrees of fixed electrical tilt and the system can be supplied with any combination to suit the site requirements. Orientation of the system is carried out by rotation of the cylinder. Lightning protection is provided via an earthing stud & finial.



**Technical Specification**

Frequency	1710-1880 MHz
Horizontal Beamwidth	3 x 65°
Vertical Beamwidth	>5°
Gain	3 x 18 dBi
VSWR	1.4:1 maximum
Front-to-back ratio	>25dB
Upper sidelobe suppression	>20 dB (20° above beam peak)
Fixed electrical downtilt	2, 4 or 6°
Isolation between ports	>30 dB typical
Connectors	6 x 7/16" DIN female
Power rating	250 watts
Operational wind speed	45 m/s
Survival wind speed	56 m/s
Wind loading	248N @ 45m/s
Dimensions	1709 x 168mm diameter
Flange mount	As customer's interface
Weight	20 Kg
Temperature Range	- 55°C to + 70°C



4 DEGREE DOWN TILT PLOT