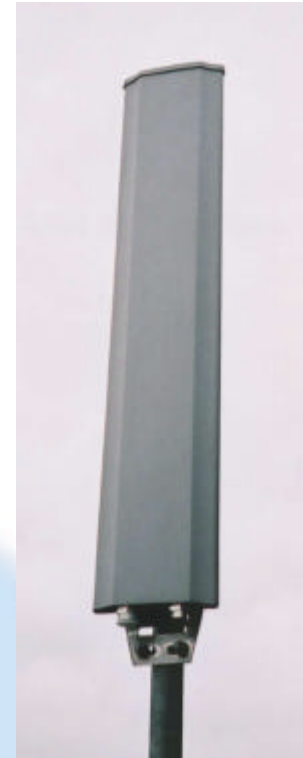




**GSM1800 XP/65/16.5  
MODEL 100-0025**

- DUAL POLARISATION
- HIGH GAIN
- LOW-PROFILE RADOME

The GSM1800 base station antennas are available with 65 or 85 degrees sector coverage, and include suppressed sidelobes as a standard feature. A number of models provide gain & fixed electrical downtilt to exactly suit the location. Superior circuit design coupled with advanced manufacturing techniques guarantee consistent product quality, with excellent intermodulation performance.



**Technical Specification**

Frequency	1710-1880 MHz
Horizontal Beamwidth	65°
Vertical Beamwidth	>10°
Gain	16.5 dBi
VSWR	1.2:1 typical
Front-to-back ratio	>25 dB
Upper sidelobe suppression	> -20 dB
Fixed electrical downtilt	2°
Below horizon null fill	1 <sup>st</sup> null 20dB below beam peak
Isolation between ports	>30 dB
Connectors (bottom)	2 x 7/16" DIN
Power rating	250 watts
Operational wind speed	45 m/s
Survival wind speed	56 m/s
Wind loading	191N @ 45m/s
Bracket tilt	8° down, 2° up
Dimensions	1025 x 196 x 39(depth) mm
Weight	8 Kg antenna, 4.5Kg brackets
Temperature Range	- 40°C to + 70°C

