

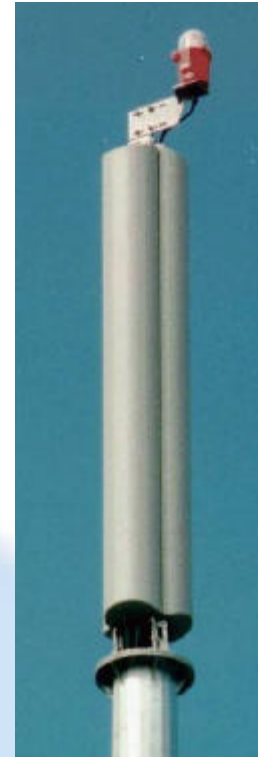


**GSM900/1800 XP/3-85/16
MODEL 1663**

- DUAL-BAND, DUAL POLARISATION
- INBUILT DIPLEXER
- SIDELOBE SUPPRESSION

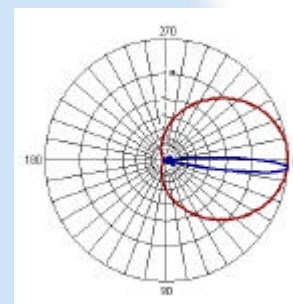
These Dual-band models are intended to reduce the antenna hardware required to operate GSM900 and GSM1800 at the same sites. The units feature inbuilt diplexers to simplify connection to feeder cables.

A number of models provide gain & fixed electrical downtilt to exactly suit the location. Superior circuit design coupled with advanced manufacturing techniques guarantee consistent product quality, with excellent intermodulation performance.

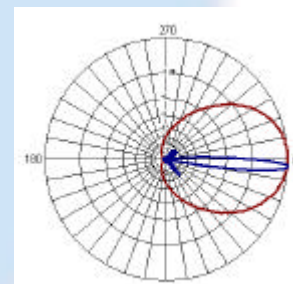


Technical Specification

Frequency	870-960Mhz	1710-1880Mhz
Horizontal Beamwidth	3 X 85°	3 X 85°
Vertical Beamwidth	8.6°	6.6°
Gain	16	16
VSWR	1.5:1	1.5:1
Fixed electrical downtilt	4°	4°
Front-to-back ratio	>25dB	>25dB
Sidelobe suppression	>-17dB	>-13dB
Isolation between ports	>23dB	>23dB
Isolation between bands	>22dB	>22dB
Power rating	300 watts	200 watts
Connectors (bottom)	7/16 DIN F	7/16 DIN F
Dimensions	2330 x 253 x 180mm (depth)	-
Weight	26kg per sector	-
Bracket downtilt	0-10°	-
Wind loading	900N @ 45m/s	-
Operational wind speed	45m/s	-
Survival wind speed	56m/s	-
Temperature	-55° to +70°C	-



GSM900



GSM1800